

Sanma



E



N



T

Surgical Microscope

Model

Crisp - i

Clarity ■ Depth ■ Ergonomics



Simple  
&  
**Captivate**

Adorable Partner for otolaryngology  
surgical & diagnosing procedures

OT

OPD

ACADEMIC EXPERIENCE CENTRE

Sanma's



Fully apochromatic Optics



Bright day light LED  
illumination system



Smooth Maneuverability  
Movements



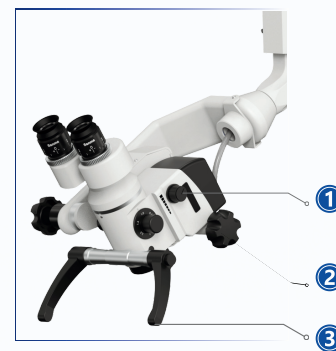
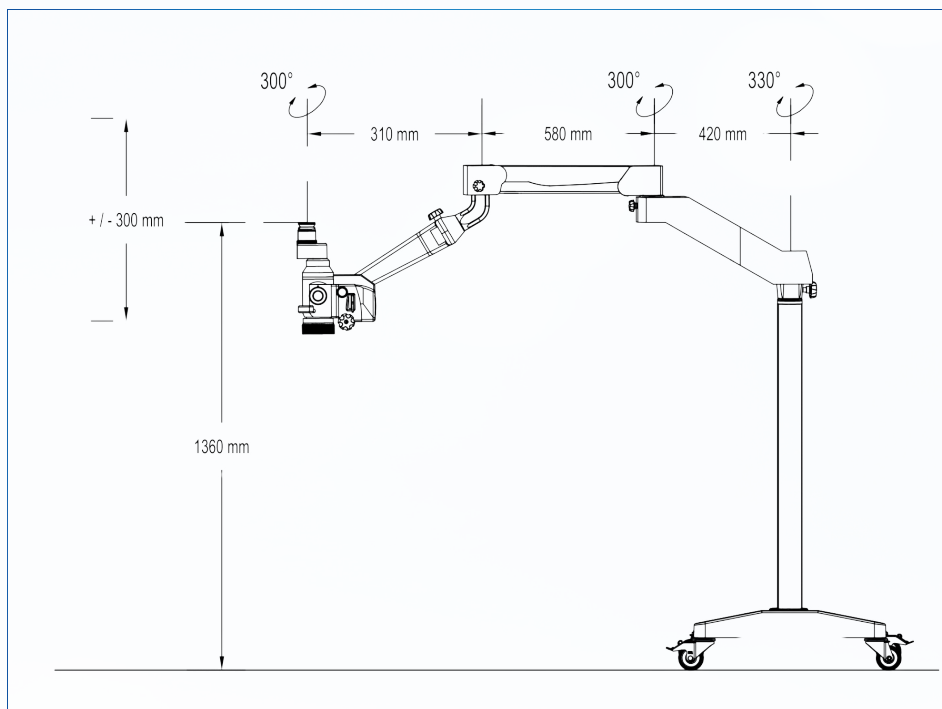
Crystal clear three dimensional reliable microscopic view



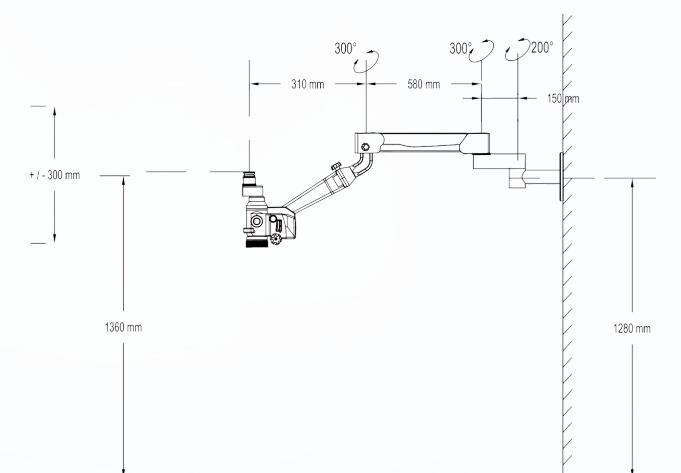
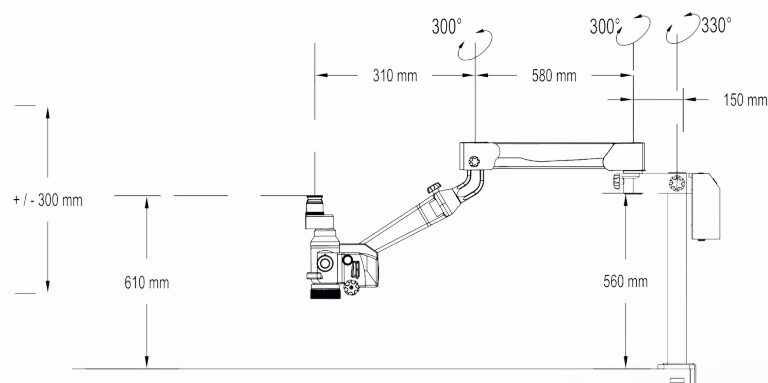
Stable movement allows smooth and automatically balanced stand  
still position during surgical procedures







1. Illumination intensity adjustment knob
2. Manual fine focus for smooth fine optical head up/down movements
3. Easy handle positioning for surgeon's convenience



#### Optional Binocular Eye Piece Tube



90° straight



0°-210° Tiltable\*  
\*optional



**Cris-pix**  
Camera Attachment

Type: I

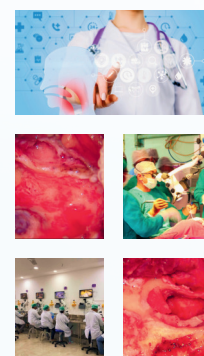


Full HD CMOS sensor integrated in microscope optical body, 60fps, HD-SDi / HDMI

Type: II



Endoscope Camera Attachment: Provision to fix 3rd party endoscope camera  
Beam Splitter: 80:20 or 50:50



## Technical Data -: Crisp - i

Features	Included	Optional
Optics	Fully Apochromatic, Galilean Type	
Eye Piece	10x Wide Field & High Eye Point	12.5x
Binocular	Straight 90° binocular	0°210° tilt able binocular tube
Diopter Adjustment	+6 to -6	
Inter Pupillary Adjustment	50mm to 75mm	
Magnification	5 Step: 0.4X, 0.6X, 1.0X, 1.6X, 2.5X	
Working Distance	f=250mm	<ul style="list-style-type: none"> <li>• 200mm / 300mm / 400mm</li> <li>• 200mm – 380mm continuous variable manually adjustable distance</li> </ul>
Fine Focus	Manual Adjustment by knob	
Movements	<ul style="list-style-type: none"> <li>• Optical Head: 0° to 90° axially and 180° side wise</li> <li>• Articulated spring for carrier arm suspension</li> <li>• DG bearing system for smooth movements.</li> </ul>	
Illumination	Integrated LED, homogenous Co-axial shadow free Bright White Spot day light color temperature, LED integrated, Inbuilt UV filter, life 50,000 +/-hours, FOV: 60mm	
Power	220 - 240v 60 - 50Hz Power Cable: 3 pin, 5M	
Weight	+/- 74kg : Floor stand, four castor wheels with lockable breaks	<ul style="list-style-type: none"> <li>• Optical head with 90° bino: +/- 1.76 kg</li> <li>• Optical head with 0°-210°: +/- 2.31 kg</li> </ul>

EMC 2014/108/EC  
 EAR Regulation (EU) 2017/745 on Medical Devices  
 Clinical Evaluation report as per EU MDR 2017/745  
 Technical documentation as per Annex II of EU regulation 2017/745  
 ISO 13485:2016 Certified facility  
 CDSCO: TN/M/MD/004755

Specifications & Design are subject to change without prior notice as a result of further product development  
 ©Sanma Medineers Vision Private Limited  
 All Rights Reserved  
 2024



Sanma Medineers Medineers Vision PVT LTD  
 68-B, North Phase, SIDCO Industrial Estate,  
 Ambattur, Chennai, TN - 600098, India

➤ Surgical

➤ Diagnosing

➤ Skill Lab

